

**ERp29 Antibody**  
**Rabbit mAb**  
**Catalog # AP91731****Specification**

---

**ERp29 Antibody - Product Information**

Application	WB, IHC, ICC
Primary Accession	<a href="#">P30040</a>
Reactivity	Rat
Clonality	Monoclonal

**Other Names**

ERp28; ERP29\_HUMAN; ERp31; HEL S 107; PDI-DB; PDIA9;

Isotype	Rabbit IgG
Host	Rabbit
Calculated MW	28993 Da

**ERp29 Antibody - Additional Information**

Dilution	WB~~1:1000 IHC~~1:100~500 ICC~~N/A
Purification	Affinity-chromatography
Immunogen	A synthesized peptide derived from human ERp29
Description	Proper protein folding and post-translational modifications are essential for secretory protein export out of the endoplasmic reticulum. This task is accomplished by chaperone proteins such as protein disulfide isomerase (PDI), GRP94, and BiP.
Storage Condition and Buffer	Rabbit IgG in phosphate buffered saline , pH 7.4, 150mM NaCl, 0.02% sodium azide and 50% glycerol. Store at +4°C short term. Store at -20°C long term. Avoid freeze / thaw cycle.

**ERp29 Antibody - Protein Information****Name** ERP29**Synonyms** C12orf8, ERP28**Function**

Does not seem to be a disulfide isomerase. Plays an important role in the processing of secretory proteins within the endoplasmic reticulum (ER), possibly by participating in the folding of proteins in the ER.

**Cellular Location**

Endoplasmic reticulum lumen. Melanosome. Note=Identified by mass spectrometry in melanosome fractions from stage I to stage IV

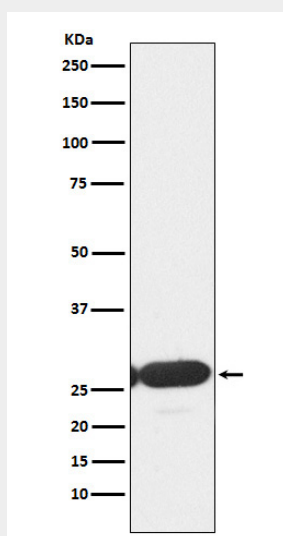
**Tissue Location**

Ubiquitous. Mostly expressed in secretory tissues.

**ERp29 Antibody - Protocols**

Provided below are standard protocols that you may find useful for product applications.

- [Western Blot](#)
- [Blocking Peptides](#)
- [Dot Blot](#)
- [Immunohistochemistry](#)
- [Immunofluorescence](#)
- [Immunoprecipitation](#)
- [Flow Cytometry](#)
- [Cell Culture](#)

**ERp29 Antibody - Images**

Western blot analysis of ERp29 expression in HepG2 cell lysate.